

AutoPulse® in the Cathlab



Best possible CPR help
when you need it most



Challenges of resuscitation in the cathlab

Saving your patient means immediate revascularization!
But also:

Intubation + ventilation, monitoring of resp. parameters

Medication

ECG management

Registration

Metabolic management

All during constant chest compressions

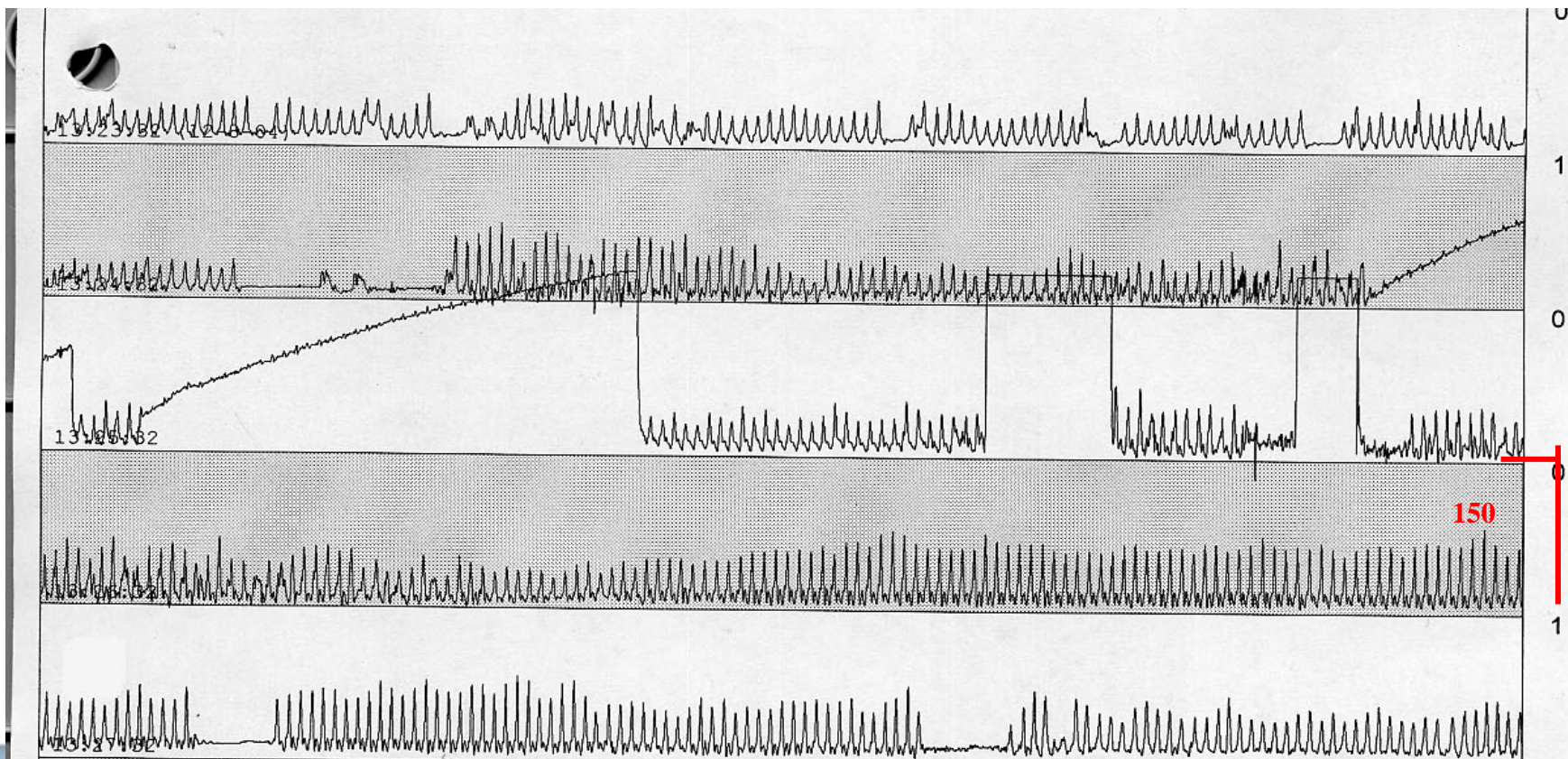


But there is more....

- Zero pressure (no bloodflow)
- Restricted space for chest compressions
- Moving patient surface
- Radiation hazard
- Bacterial contamination
- Understaffing



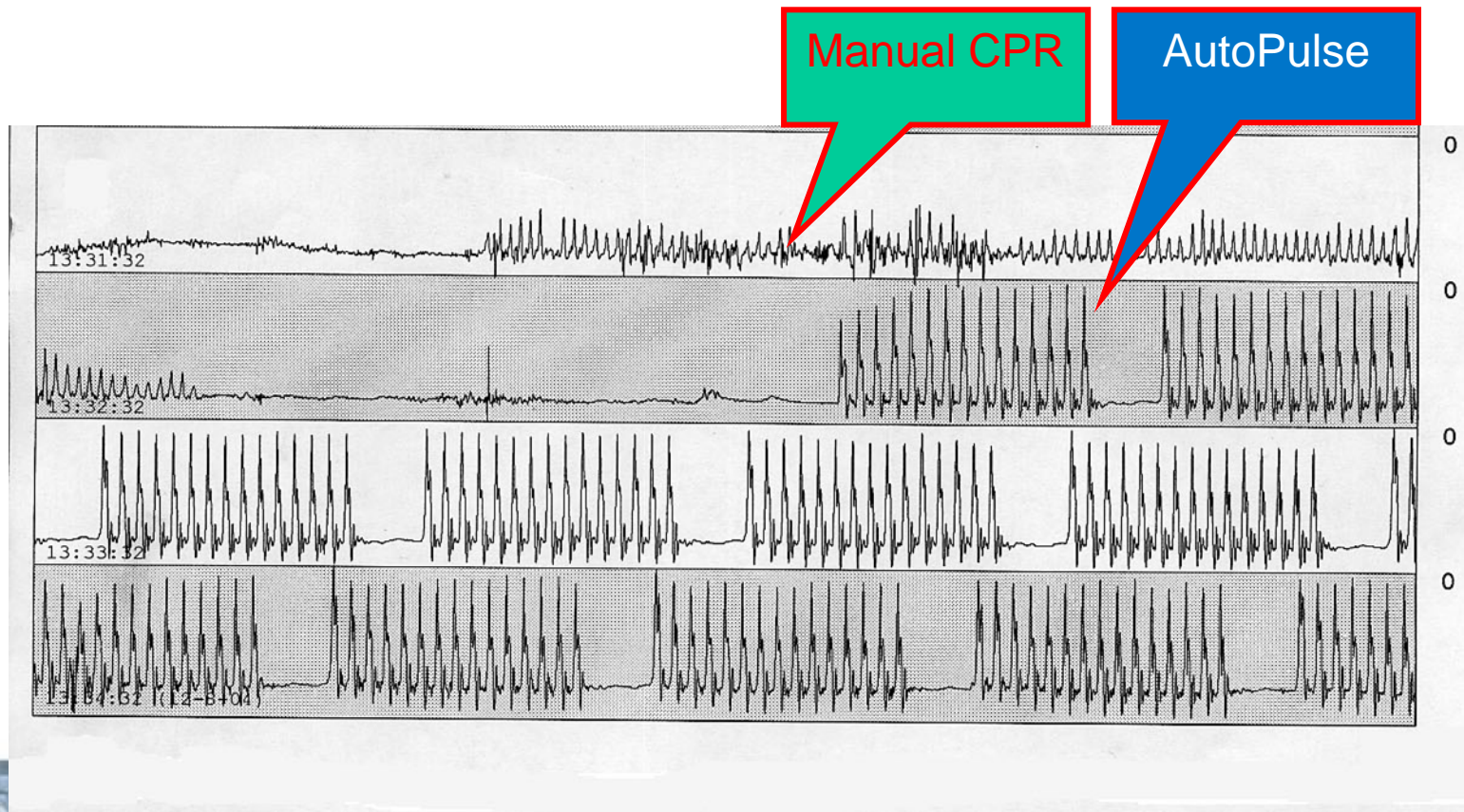
Zero Pressure *How to maintain bloodpressure?*



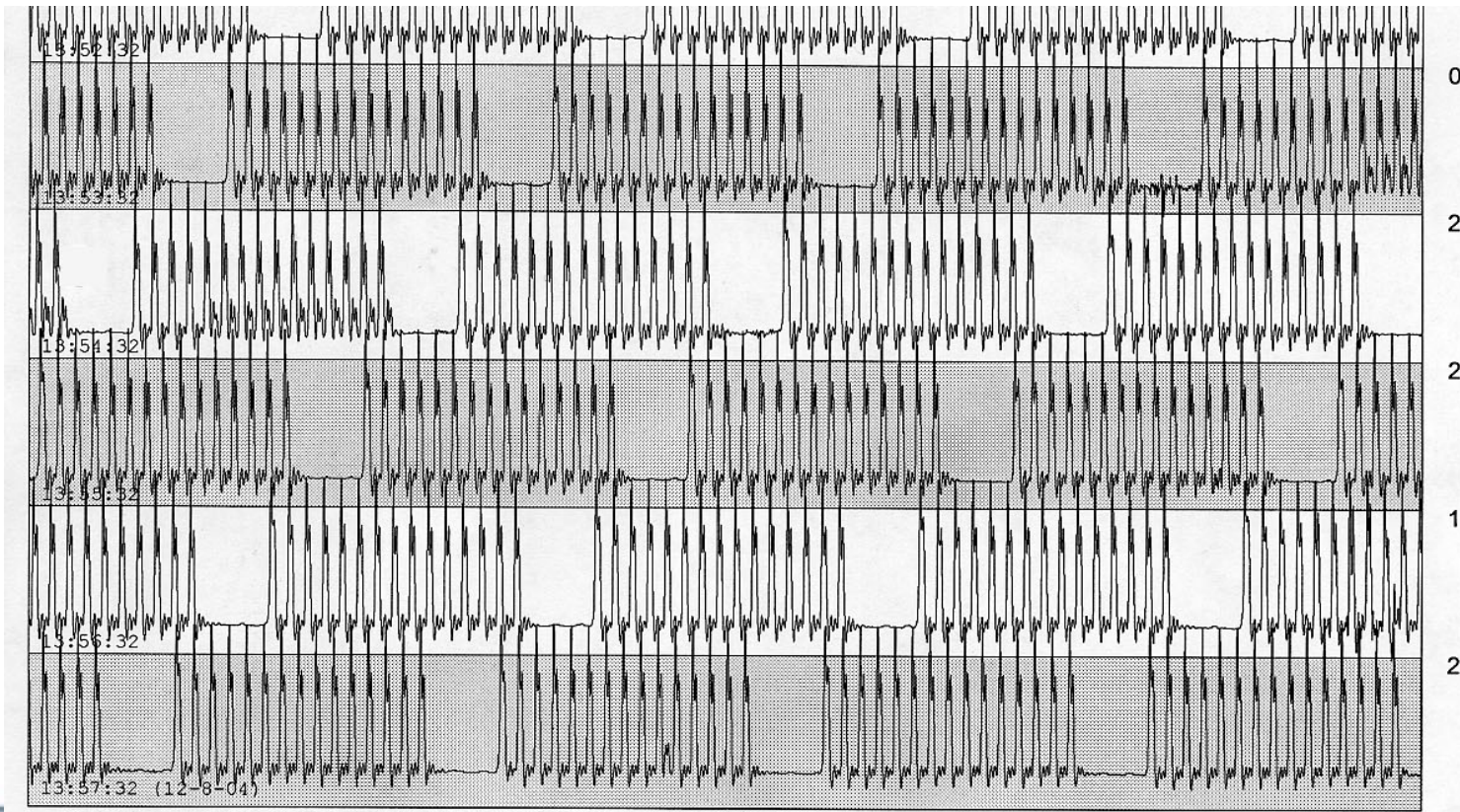
0-1 = 0-150 mmHg



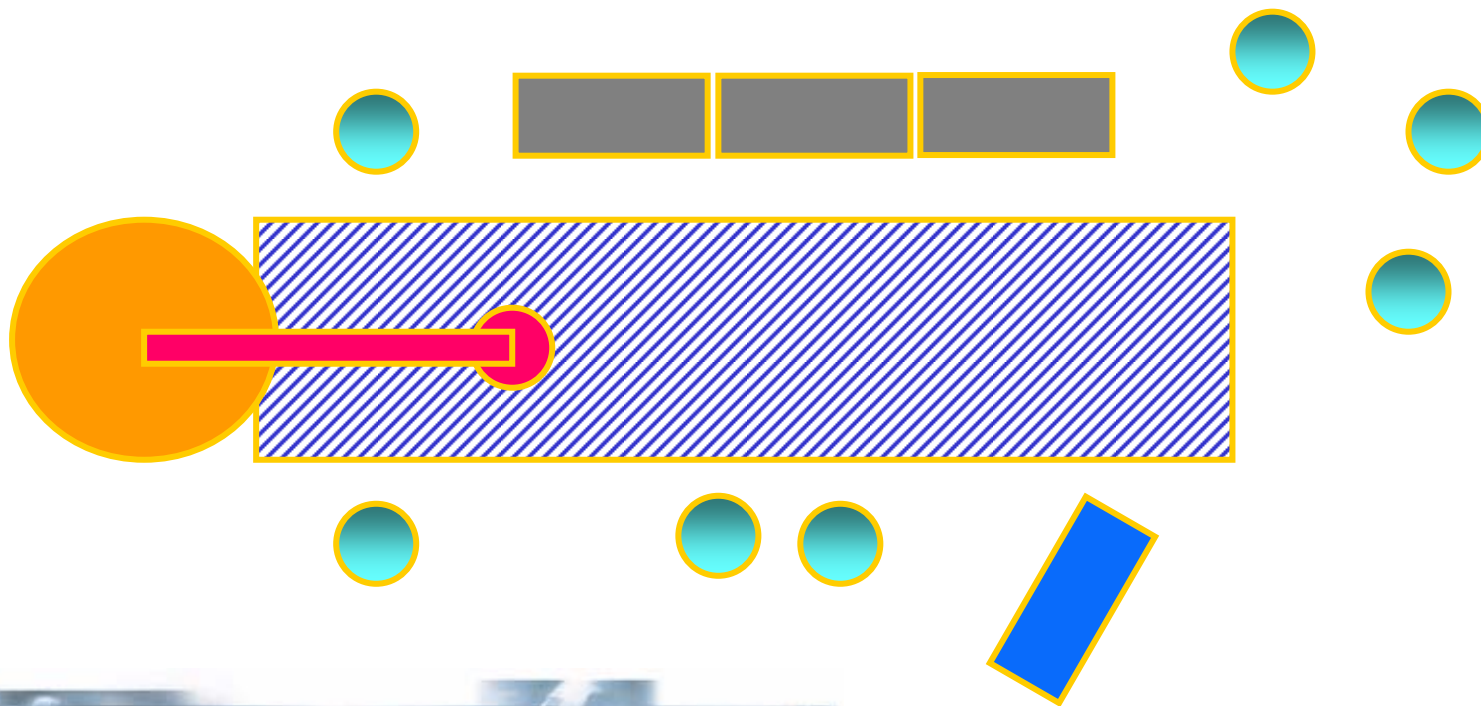
Maintaining excellent pressure



Constant quality as long as needed



Restricted space for chest compressions



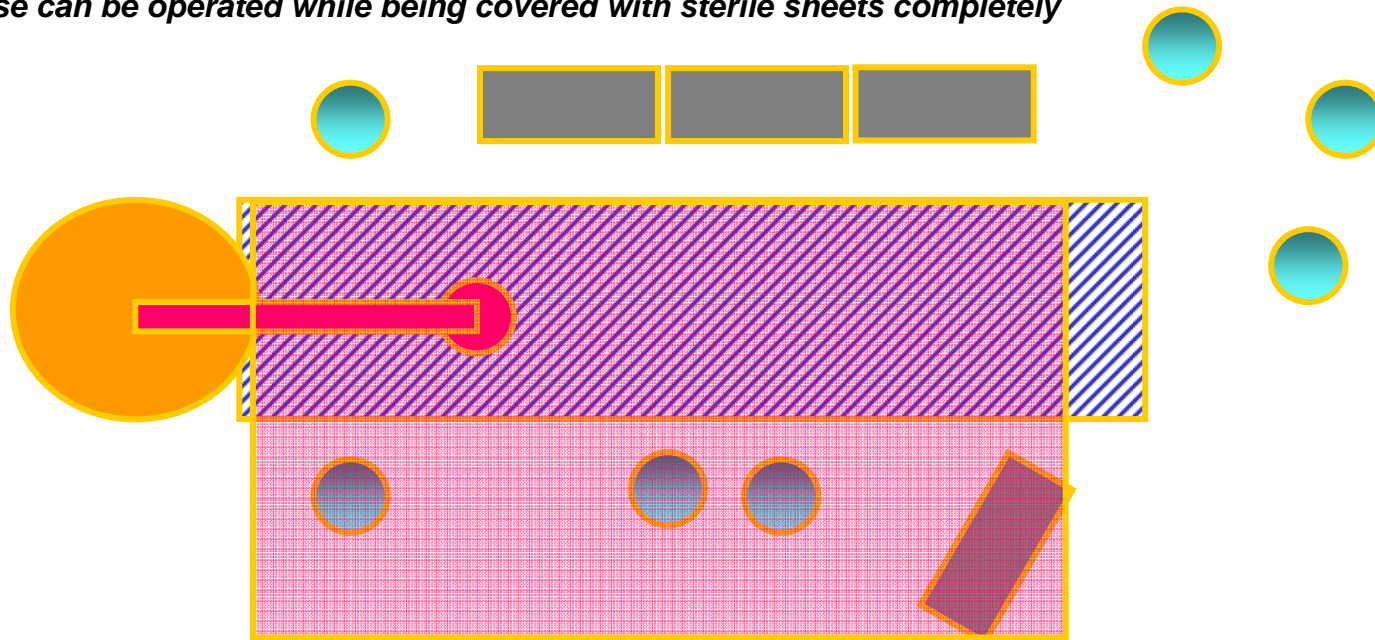
Moving patient surface

Energy of chest compressions is partially absorbed by oscillations of table



Risk of bacterial contamination

- *Manuel chest compressions will affect the integrity of the sterile working area, as would other mechanical chest compression devices*
- ***AutoPulse can be operated while being covered with sterile sheets completely***



Benefits AutoPulse® offers in your cathlab:

- Bloodpressure > 150 mm Hg (peak AP)
- No compromises between PCI and other actions
- Unaffected by moving patient surface
- Safeguards staff from X-ray exposure
- Maintains integrity of sterile working area
- Staff can attend to primary duties



10/13

Deployment

- Device has to be installed under the patient
- Certain angles for x-ray



11/13

AutoPulse[®]: Application in the Cathlab

Conclusion:

AutoPulse meets the challenges of the complex resuscitation in the Cathlab

AutoPulse may slightly inhibit the image quality, but allows visualisation of the left and right coronary system



Contact

Internet: <http://www.zollmedical.de>

Mail: info@zollmedical.de

Or contact your local ZOLL Medical
Representative

