

Pedi-padz® Solid Gel Multi-function, 10-ft (3m) Leadwires

Instructions for Use

OPERATING TEMPERATURE: 0°C to 50°C (32°F to 122°F)
SHORT TERM STORAGE TEMPERATURE: -30°C to 65°C (-22°F to 149°F)
LONG TERM STORAGE TEMPERATURE: 0°C to 35°C (32°F to 95°F)



Rx ONLY



IPXX

MD



January 2024
R2075-04 Rev. G

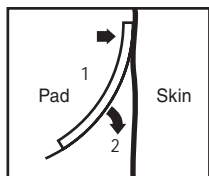
Intended Purpose: To transfer energy for defibrillation, cardioversion, non-invasive pacing therapy to the heart and provide ECG monitoring.

Indications for use: For use on pediatric patients with ZOLL® R Series®, X Series®, X Series® Advanced and Propaq® MD by trained personnel including Physicians, Nurses, Paramedics, Emergency Medical Technicians and Cardiovascular Laboratory Technicians. The Pedi-padz electrodes are indicated for use on pediatric patients less than 8 years of age or weighing less than 55lbs (25kg). For patients over 25kg, adult electrodes are recommended.

SKIN PREPARATION

Ensure skin is clean and dry. Remove any debris, ointments, skin preps, etc. with water (and mild soap if needed). Wipe off excess moisture/diaphoresis with dry cloth.

ELECTRODE APPLICATION



1. Apply one edge of the pad securely to the patient.
2. "Roll" the pad smoothly from that edge to the other. Be careful not to trap any pockets of air between the gel and skin.
3. Connect electrodes to ZOLL multifunction cable.
4. Connect ECG leads for demand pacing.

⚠ Poor adherence and/or air under the electrodes can lead to the possibility of arcing and skin burns.

ELECTRODE PLACEMENT (Anterior-Posterior)

Recommended for defibrillation, non-invasive pacing, cardioversion, and ECG monitoring of pediatric patients.

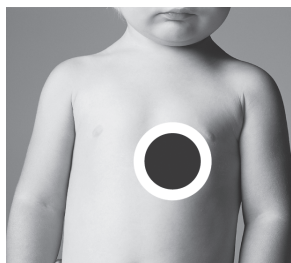
POSTERIOR



Grasp the Posterior electrode at the red tab and peel away from the plastic liner. Apply electrode centered along spine of patient.

⚠ Always apply Posterior electrode first. If Anterior electrode is already in place when patient is being maneuvered for placement of the Posterior, the Anterior may become partially lifted. This could lead to arcing and skin burns.

ANTERIOR APICAL



Grasp the Anterior Apical electrode at the red tab and peel away from the plastic liner. Apply over cardiac apex with the nipple under adhesive area.

⚠ Avoid any contact between nipple and gel treatment area. Skin of the nipple area is more susceptible to burning.

⚠ WARNINGS

1. Do not use if gel is dry. Dried out gel can lead to skin burning. Do not open pouch until ready to use. Do not use electrodes past the expiration date printed on the pouch label.
2. Do not fold electrodes or packaging. Any fold in or other damage to the conductive element could lead to the possibility of arcing and/or skin burns.
3. After patient movement due to muscle contraction or patient repositioning, press pads to skin to ensure good coupling between pads and skin.
4. Transcutaneous pacing may cause burns to the skin. Periodically check the electrode site to ensure that the electrodes are well adhered to the skin.
5. During transcutaneous pacing, do not exceed the maximum pacing settings of 1 hour of pacing (75 mA/150 ppm). Doing so can increase the possibility of skin burns.
6. Replace electrodes after 24 hours of skin contact or 1 hour of pacing to maximize patient benefit.
7. These electrodes are recommended for patients less than 8 years of age or weighing less than 55lbs (25kg). For patients over 25kg, adult electrodes are recommended. Do not delay therapy to determine actual weight of patient during emergency.
8. Avoid electrode placement near the generator of an internal pacemaker, other electrodes or metal parts in contact with the patient.
9. Some current generated by electrosurgical units (ESU) may concentrate in the conductive gel of pacing / defibrillation electrodes, especially if an ESU grounding pad other than that recommended by the ESU manufacturer is used. Consult the ESU operator's manual for further details.
10. To avoid electrical shock, do not touch the pads, patient, or bed when defibrillating.
11. Do not discharge standard paddles on or through electrodes or place separate ECG leads under pads. Doing so could lead to arcing and/or skin burning.
12. Device disposal shall follow hospital protocol.
13. Use only with ZOLL pacemaker/defibrillator products.
14. Do not use electrodes in the presence of oxygen-rich environment or other flammable agents. Doing so could cause explosion.
15. If any serious incident has occurred in relation to the device, the incident should be reported to the manufacturer and the competent authority of the Member State in which the user and/or patient is established.
16. If repositioning of the electrodes is needed, consider replacement with a new electrode.

ZOLL®



ZOLL Medical Corporation
269 Mill Road
Chelmsford, MA 01824-4105 USA
800-348-9011 Made in USA

EC REP



ZOLL International Holding B.V.
Einsteinweg 8A
6662 PW Elst, Netherlands

CH REP



ZOLL Medical Switzerland AG
Boarerstrasse 8
6300 Zug, Switzerland